
Configuring Netscape/Mozilla Mail for the New E-Mail Server

Copyright © 2004 PhD Computing

	Revision History	
Revision v1.0.1	2005-02-25	MRJ
Revision v1.0.0	2004-01-01	MRJ
	Initial Release	

This tutorial explains how to configure Netscape/Mozilla Mail for use with the new e-mail server at PhD Computing.

Table of Contents

1. Configuring Netscape/Mozilla Mail for the new Servers	1
--	---

1. Configuring Netscape/Mozilla Mail for the new Servers

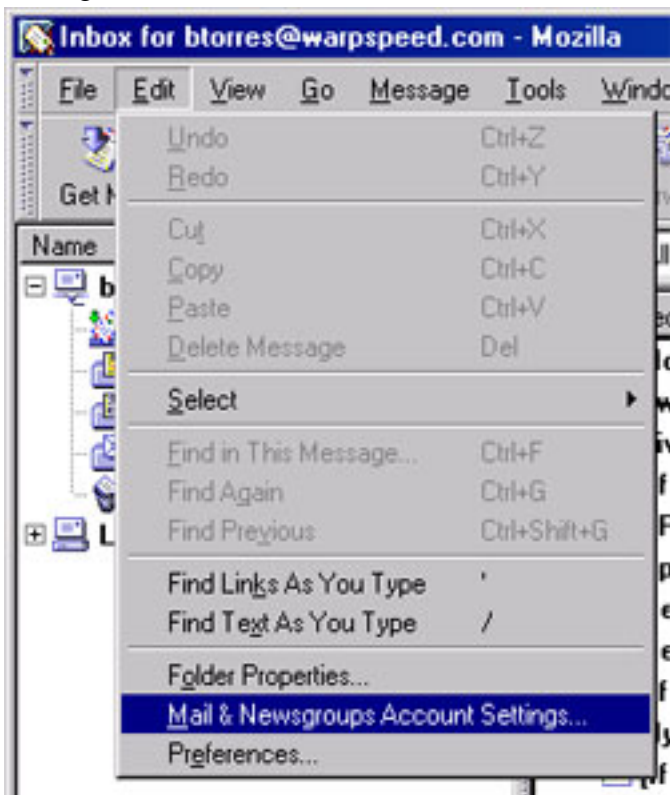


Important

This tutorial was written using Mozilla Mail 1.6. This is the same program as the Mail program included in Netscape 6 and 7. Any references to "Mozilla Mail" in the text also apply to Netscape Mail. The Mail application included in Netscape 4 is different, and is not covered in this document.

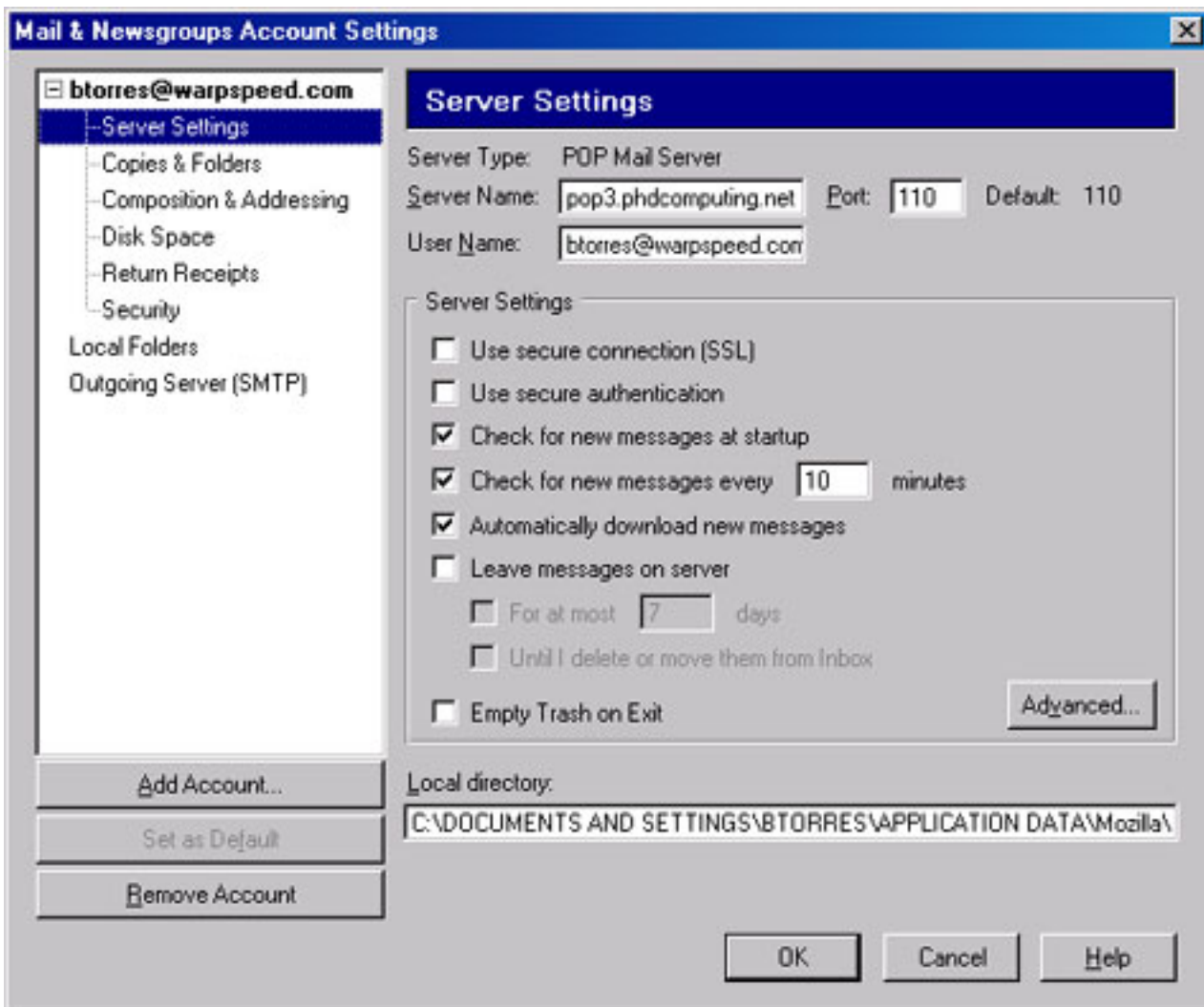
You will need to start Mozilla Mail to configure your e-mail account. Do not enter your password at the password prompt, but cancel instead.

Once Mozilla Mail has started, and you are at the main screen, Choose the option Mail & Newsgroups Account Settings from the Edit menu.



At the Window that appears, you will want to choose your old e-mail account, and go to the server settings item under the account name. If you do not see any items underneath your e-mail account name, click the plus sign to the left of the account name.

Configuring Netscape/Mozilla Mail
for the New E-Mail Server



In the form on the right of the screen locate the Server Name entry. Change the entry to **pop3.phdcomputing.net**.

Next, go to the Outgoing Server (SMTP) section on the left, and change the server name on the right to **smtp.phdcomputing.net**. When you are done, click the OK button.

Please also make sure the User Name is set to your full e-mail address.

Configuring Netscape/Mozilla Mail
for the New E-Mail Server

