
Configuring Eudora Mail for the New E-Mail Server

Copyright © 2004 PhD Computing

	Revision History	
Revision v1.0.1	2005-02-25	MRJ
Revision v1.0.0	2004-03-19	MRJ
	Initial Release	

This tutorial explains how to configure Eudora Mail for use with the new e-mail server at PhD Computing.

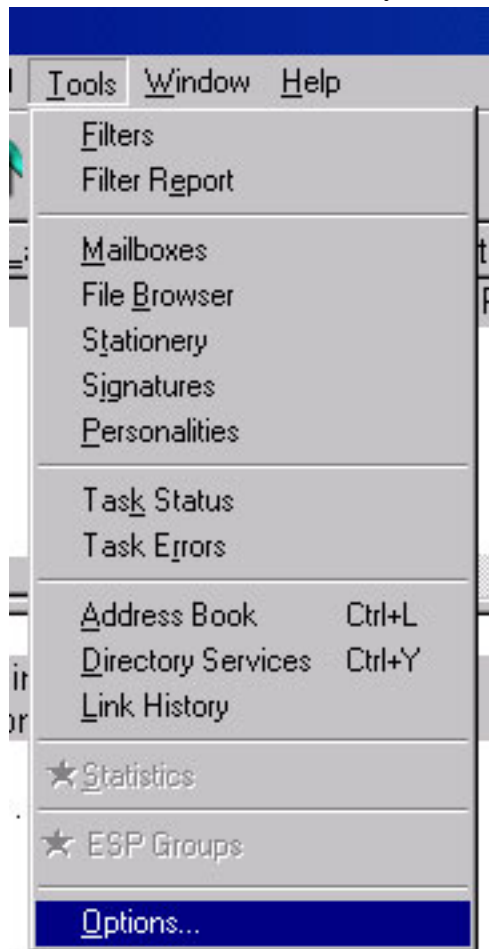
Table of Contents

1. Configuring Eudora Mail for the new Servers	1
--	---

1. Configuring Eudora Mail for the new Servers

You will need to start Eudora to configure your e-mail account. Do not enter your password at the password prompt, but cancel instead.

Once Eudora has started and you are at the main screen, Choose the Options from the Tools menu.



At the Window that appears, you will want to change the Mail Server to **pop3.phdcomputing.net** and the SMTP Server to **smtp.phdcomputing.net**. Please also make sure the Login Name is set to your full e-mail address.

