
Configuring Eudora Mail for Your PhD E-Mail

Copyright © 2004 PhD Computing

Revision v1.0.1	Revision History 2005-02-25	MRJ
Revision v1.0.0	Clarified login procedure 2004-03-19	MRJ
	Initial Release	

This tutorial explains how to use Eudora Mail to connect to your e-mail account at PhD Computing.

Table of Contents

1. Configuring Eudora Mail for E-Mail	2
1.1. Adding Your E-Mail Account	2

1. Configuring Eudora Mail for E-Mail

1.1. Adding Your E-Mail Account

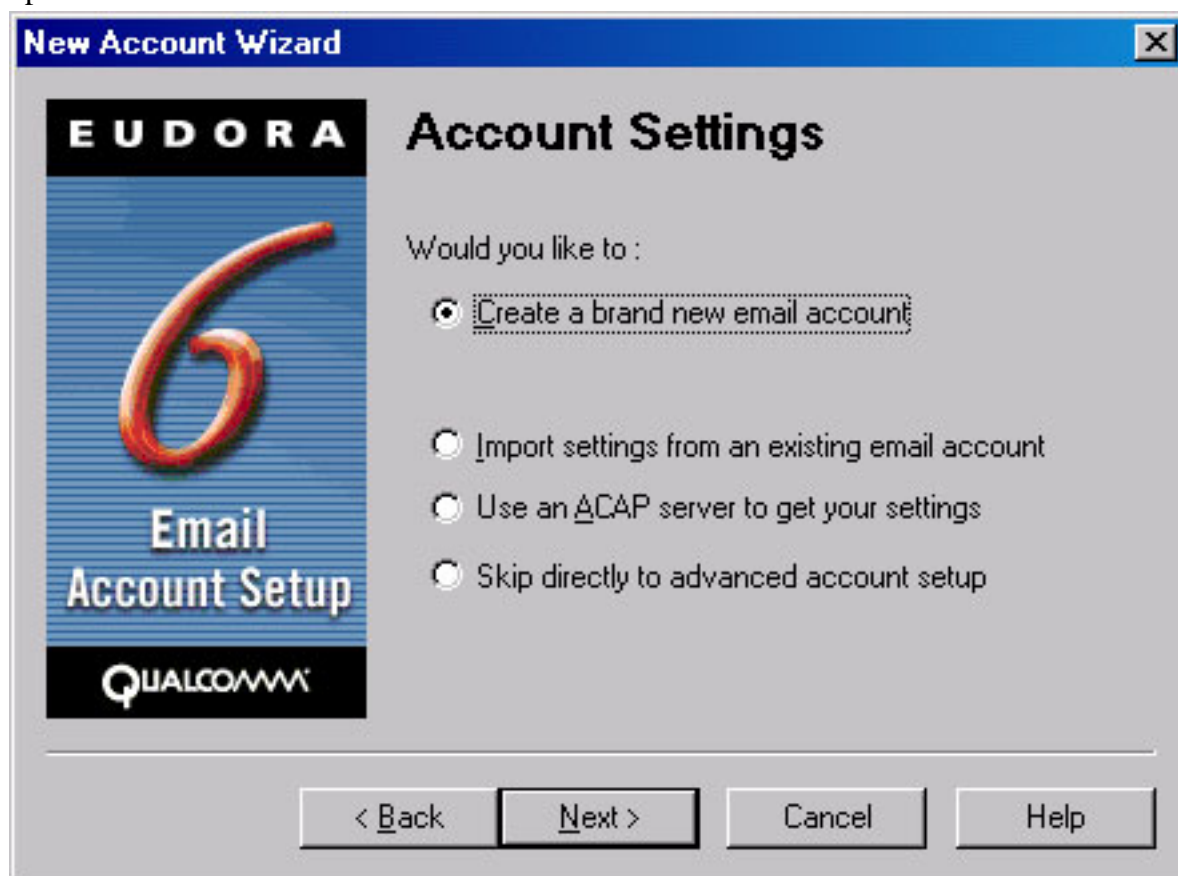


Important

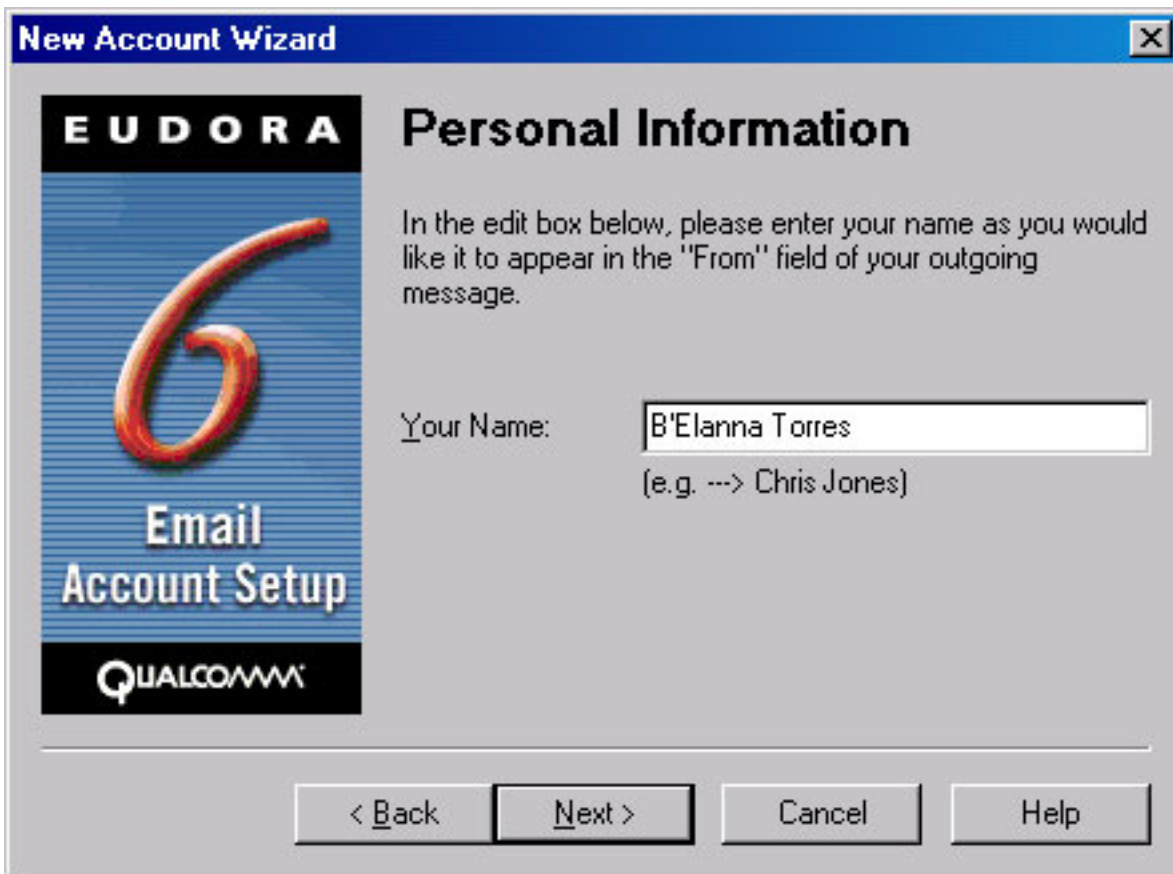
This tutorial was written assuming you have not configured Eudora before. If you already have an e-mail account configured in Eudora, you will need to use the information in the following steps to add another e-mail account.

When you first start Eudora, the New Account Wizard will start and walk you through the process of adding the settings for your e-mail account. At this welcome screen, you can simply click on next to start the configuration.

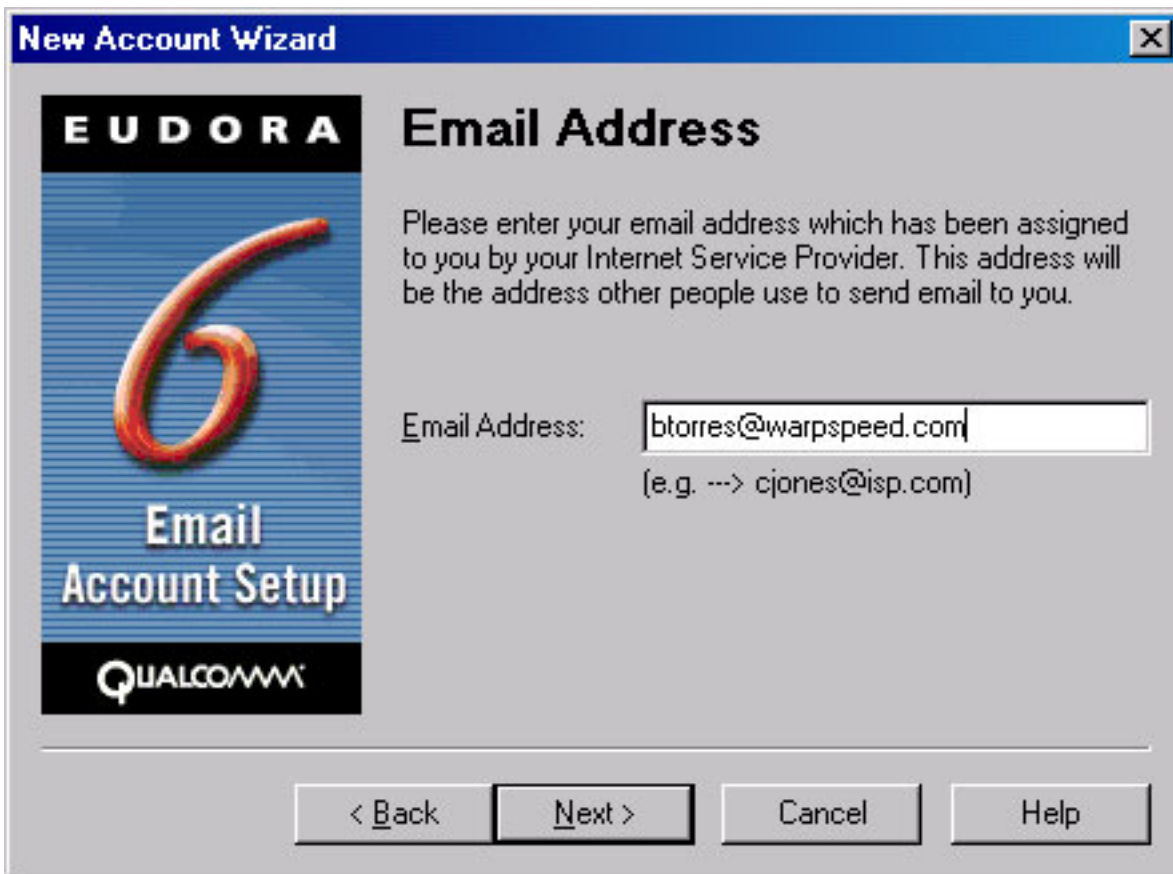
The next screen will ask you how you would like to create the e-mail account. You will want to choose the top option "Create a brand new email account."



The next screen will ask for your name. To help avoid detection as spam, it is recommended that you do not use symbols such as "@" in your name.



You will now need to enter your e-mail address.



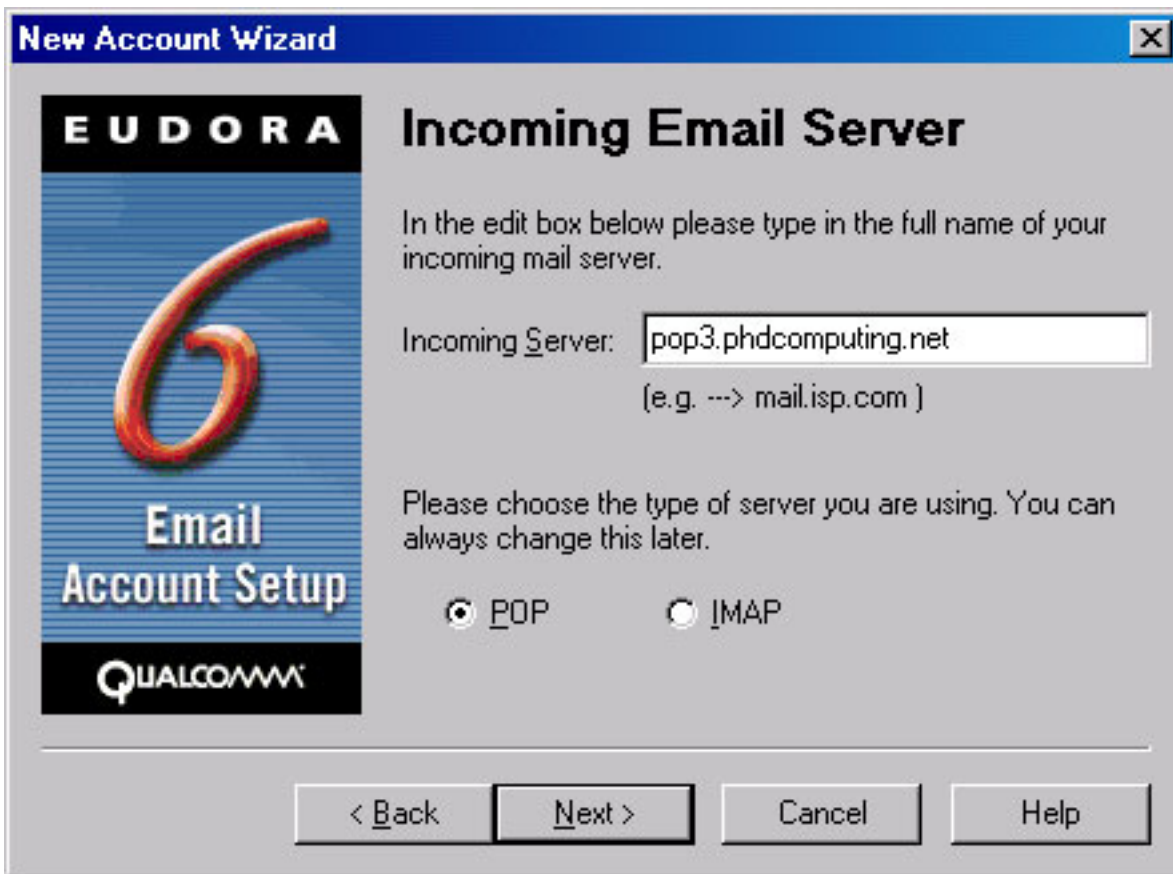
Eudora Mail will now ask you for your login name. Enter your full e-mail address as the login name.



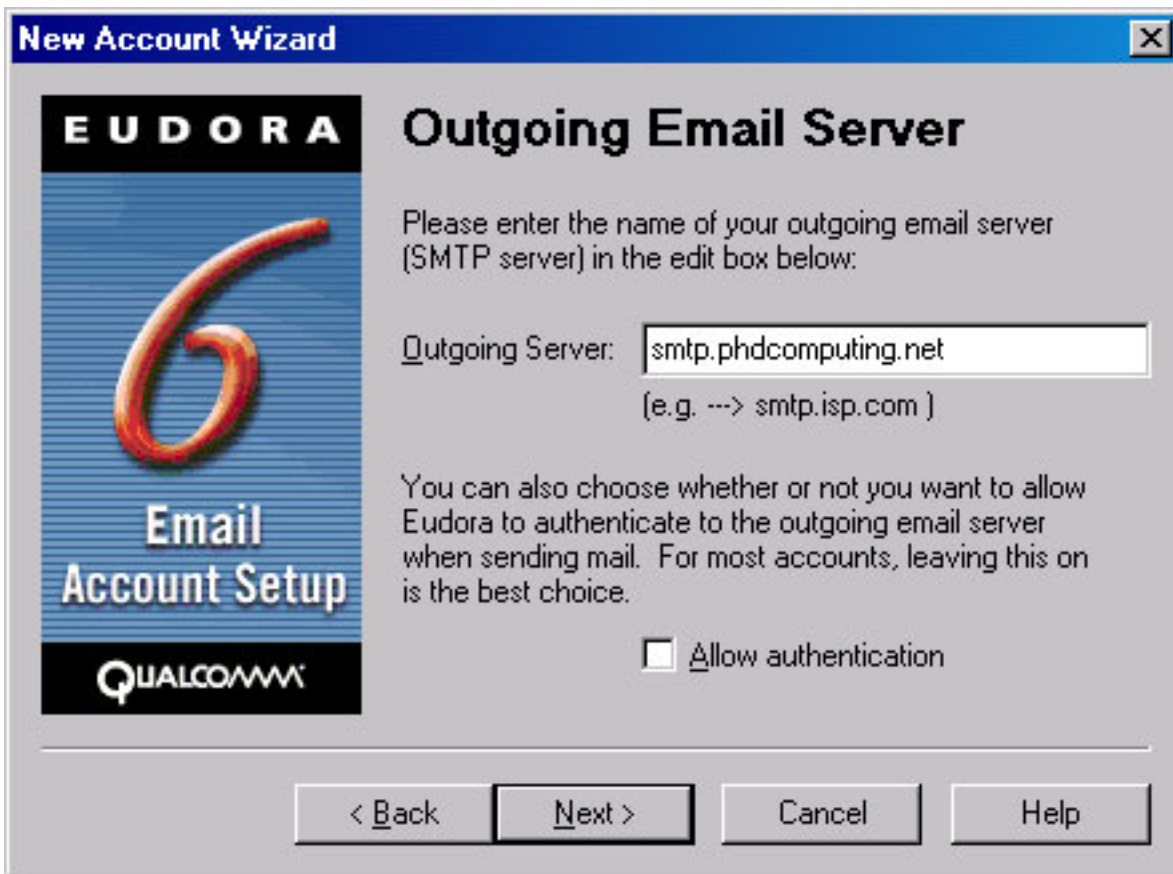
Note

Your login name must be your full e-mail address or you will get login errors

You will now be asked to select the server type and enter the server name for the Incoming server. You will want to select the POP3 type. Set the Incoming mail server as **pop3.phdcomputing.net**.



The next screen will ask you to enter the name of the Outgoing server. Set the Outgoing mail server as **smtp.phdcomputing.net**. You do not need to check the box for authentication.



The last screen lets you know you have finished the steps required to configure your e-mailaccount. To begin using your new mail account, simply click Finish.

